

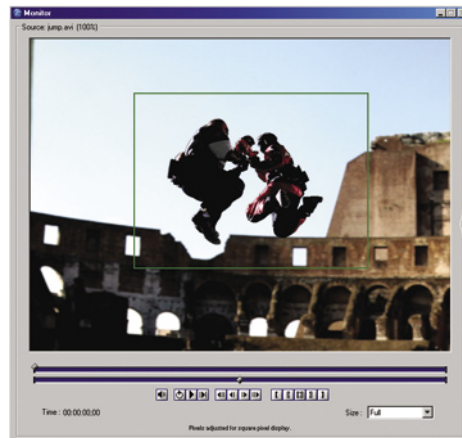
Key New Features in Cleaner XL 1.5

- *Scriptable: Users can now build scripts and automate encoding jobs as part of their daily processes using the new command line interface and support for Autodesk® Backburner™ rendering software*
- *LUT support allows Cleaner XL to import images with a bit depth higher than 8-bits*
- *Pre-sets have been added to reflect changes and updates in preferred output formats*
- *Interoperability with Autodesk products. Launch a Cleaner XL encoding job from within Autodesk Systems products such as Discreet® Smoke® and Discreet® Flame® as well as Autodesk® Combustion® software. Cleaner XL can read clips directly from the Autodesk® Stone® file system, meaning that no intermediate renders are needed.*

Make sure your encoded media looks its best with Autodesk® Cleaner® XL software. High-quality filters and total control of the industry's leading encoders let you create stunning Windows Media® and QuickTime® video. Use MPEG-4 and Kinoma® technology to master video for handheld PDAs and cell phones.

But Cleaner XL isn't just about encoding. With powerful workflow features such as Cleaner XL watch folders, stream publishing, and command line scripting, it is easier than ever to integrate Cleaner XL into your existing facility workflow.

Exceeding the stringent demands of media professionals, Cleaner XL offers high-quality encoding, flexible workflow, productivity, and speed. Whether you're producing entertainment, corporate communications, e-learning, advertisements, or proposals – you can rely on Cleaner XL software to help your media look and sound its best.



*Preview window for monitoring
Images courtesy of Buzz Image Group and Les Films Stupefiants*

New Format Support

- Input formats: DPX, Cineon, OpenEXR
- Output formats: DivX®, FLV (Flash® video exporter)

Updated Codecs and Enhancements

- Real 10 for RealVideo® and RealAudio®
- Support for QuickTime 7 including support for H.264
- MPEG 2: Support for 4:2:2 and two-pass variable bit rate encoding
- Kinoma v3 exporter for the latest PDA handheld devices

Quality

With Cleaner XL, an easy-to-use, automated workflow doesn't mean you have to sacrifice quality. Intelligent color space conversions, native YUV processing, a complete selection of editable filters, and ready-to-use profiles let you optimize the quality for each output format. Cleaner XL includes a complete set of professional audio filters with a 6-band parametric equalizer and compressor/limiter so your media can sound as good as it looks.

Flexibility

To reach the widest audience, you need to be able to deliver your media in a variety of formats, sizes, and bit rates. No matter what your requirements, Cleaner XL software can meet your needs. With Cleaner XL you're ready to create all the latest formats, including Windows Media 10, QuickTime, MPEG (1, 2 & 4), RealVideo, Kinoma for Palm® OS based PDAs, DivX, and many others.

Because Cleaner XL software can accept almost any source format, your existing media creation tools will become even more valuable and flexible when coupled with Cleaner XL.

Productivity

Multiple output formats, sizes, and bit rates don't have to mean more work. Cleaner XL software has a streamlined workflow so you can get more work done in less time. Each job can create multiple outputs and deliver each of those outputs to multiple destinations.

Almost every part of a job, from output profiles to filter presets, can be re-used and easily shared. The job queue lets Cleaner XL process in the background while you're preparing other jobs.

Detailed Feature List

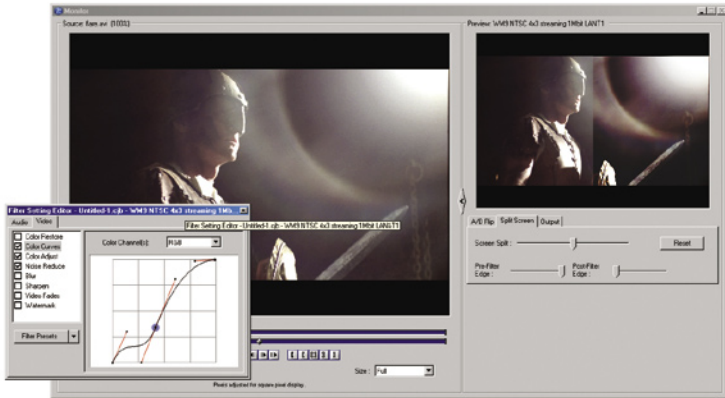
Support for the Latest in-Demand Formats

- **NEW** Support for common post-production formats such as: DPX, Cineon™, OpenEXR
- **NEW** Export to the widely adopted DivX format
- **NEW** Export to Flash® video (FLV) for playback using the Macromedia® Flash Player
- **NEW** 3GP and Sony® MQV support to encode to common handheld devices
- Support for Microsoft® Windows Media 10, including multi-channel audio
- Support for QuickTime 7, including H.264, MPEG-4 video, and AAC audio
- Support for Real 10, which includes RealVideo and RealAudio
- Kinoma format for Palm OS based PDAs
- Fast MPEG encoding (including 4:2:2 and two-pass) speeds media preparation for DVD and Video CD creation
- Robust support of the industry's most compelling media formats including: MPEG (1, 2 & 4), MP3, AVI, and WAV



*Video Filter
Settings Editor*

Images courtesy of Buzz Image Group and Les Films Stupefiants



Color curve adjustment

Images courtesy of Buzz Image Group and Les Films Stupefiants

Productivity Features

- **NEW** LUT Support for importing logarithmic images and images with higher than 8-bit color depth such as floating point file formats like OpenEXR
- **NEW** Scriptable encoding through command line interface
- **NEW** Cleaner XL reads frames directly off the Autodesk Stone file system
- **NEW** Support for Autodesk Backburner software allows other Autodesk applications to launch Cleaner XL encoding tasks
- **NEW** Preset output profiles for encoding to preferred delivery formats
- Job-based workflow allows you to work on multiple jobs simultaneously
- Use the Job Queue to manage job list and priority
- Highly optimized application for incredible encoding speeds
- Watch Folders for automated encoding. Associate a job template to a folder and simply drag and drop files to begin encoding. Export directly from your editor or digital media application into a Watch Folder.
- Includes hundreds of customized and ready-to-use output profiles designed by encoding professionals
- Optimizations for multiple processors and Hyper-Threading enables you to work faster than ever
- High-performance media filters optimized for stunning quality with complete creative control
- Intelligent color space conversion preserves source fidelity and accelerates processing
- Reusable job templates and filter presets decrease repetitive setup tasks
- Stream Publishing makes it easy to automatically distribute your encoded media to multiple destinations such as a disk burning station, a web server, or shared environments for review and approval
- Multiple local, network, and FTP destinations per output

Monitoring Tools

- View input source with playback and navigation controls
- Use input proxy views for faster visualization
- Specify encoding range using in and out points
- Preview result of video filters before encoding
- Side-by-side split view to compare before and after filters prior to encoding
- Generate accurately rendered representation of encoded output for quality control purposes

High-Quality Video Filters

- Powerful color adjustment with filters for setting black and white levels, making non-linear color balance changes with curves, and additional controls for adjusting parameters such as gamma, brightness, contrast, hue, and saturation
- Noise Reducer for softening areas of low detail and sharpening areas of high detail
- Blur/Sharpen for greater creative control of final output image
- Video Faders provide numerous preset fade styles
- Overlay a watermark (with associated URL) on output video
- Letter Box Removal: Intelligently crop your video to get rid of the black bars at the top and bottom of letter-boxed video

Professional Audio Processing

- Automatically remove hum, off-axis noise, and clipping/drop outs
- 6-band parametric equalizer
- Compressor/Limiter
- Multiple audio fade options – choose from four different curves when fading in and out

Supported input formats

MPEG-1, MPEG-2, MPEG-4, QuickTime, Video for Windows, Windows Media, AIFF, AU, DV, MP3, WAV, BMP, GIF, JPEG/JFIF, PICT, PNG, Silicon Graphics Image File, TGA, TIFF, DPX, Cineon, OpenEXR, QuickTime Image File (QTIF), Animated GIF, FLC, and other video, audio, animation, and still image formats

Supported output formats

DV, MPEG-1, MPEG-2 (4:2:2 and two-pass encoding), MPEG-4, QuickTime, RealVideo and RealAudio, Video for Windows, Windows Media, DivX, Kinoma, Sony MQV, 3GP, Wildform FLV and SWF, AIFF, AAC, MP3, iTunes® M4A, WAV, BMP, JPEG/JFIF, PICT, PNG, QuickTime Image File (QTIF), Silicon Graphics Image File, Targa Image File (TGA), TIFF, and other video, audio, animation, and still image formats

Minimum System Requirements

- Pentium® 3 or 4, 800 MHz or better
- Microsoft Windows XP (Professional and Home Edition) or Windows 2000 with SP4
- QuickTime 6.5 or 7.0
- Windows Media 9/10 (included)
- DirectX® 8.1 or greater (included)
- 256 MB RAM
- 75 MB available hard disk space
- 1024 x 768 16-bit display

In general, system performance parameters such as processor type, quantity, cache size, disk drive type and size, and graphics card type and settings will affect overall system performance when using Cleaner XL. Faster multiple CPUs will increase encoding performance. Adequate RAM, disk performance, and storage capacity should be considered for media type, size, and workflow demands. In general, hardware that is faster with higher capacity is usually better.

Cleaner XL Sales & Support Contact Information

Autodesk Media @ Entertainment
10 rue Duke, Montréal, Québec, Canada H3C2L7

Fax: 514.954.7399

Sales: 1.800.869.3504 (@ first prompt press 3) 1.415.507.4461

Technical Support: ME.support@autodesk.com (9am - 9pm EST)

Activation, Registration and Key Questions:

1.800.551.1490 (8am - 8pm EST)